

OLD TINY HOMES ON WHEELS



OVERSTOCK EXPRESS



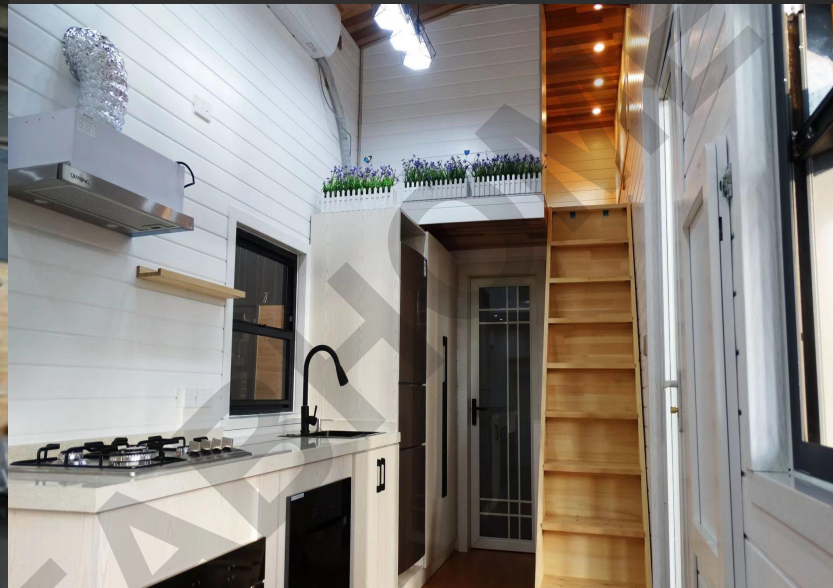
OUR WORKSHOP REVIEW

OED Tiny House On Wheels

ABOUT US!

Hebei Jiming SeaArt Villas is a professional manufacturer and suppliers that is concerned with the design, development and production of Light Steel Structure Houses.





NEW MOUNTAIN STYLE HOUSE

- This house is our hot sale, house size is 7.8*2.3*4.2 M, two lofts for bedrooms, full sets of kitchen and bathroom with bathtub!



↑
Fridge,Air
conditioner,
washer&dry
er are all
installed,Co
mposting
toilets,batht
ub,folding
table,
fireplace ect
all included!



↑
Standard electricity parts
and transfer



← C89 Light Gauge
Frame with Width
89 MM



← 3 Anxels
American
style trialer

3D VIEW →



01



Orlando style

Orlando style house is welcomed in EUROPE MARKETS, The roof has an open balcony with stairs on second floor!

02

02

Inside details

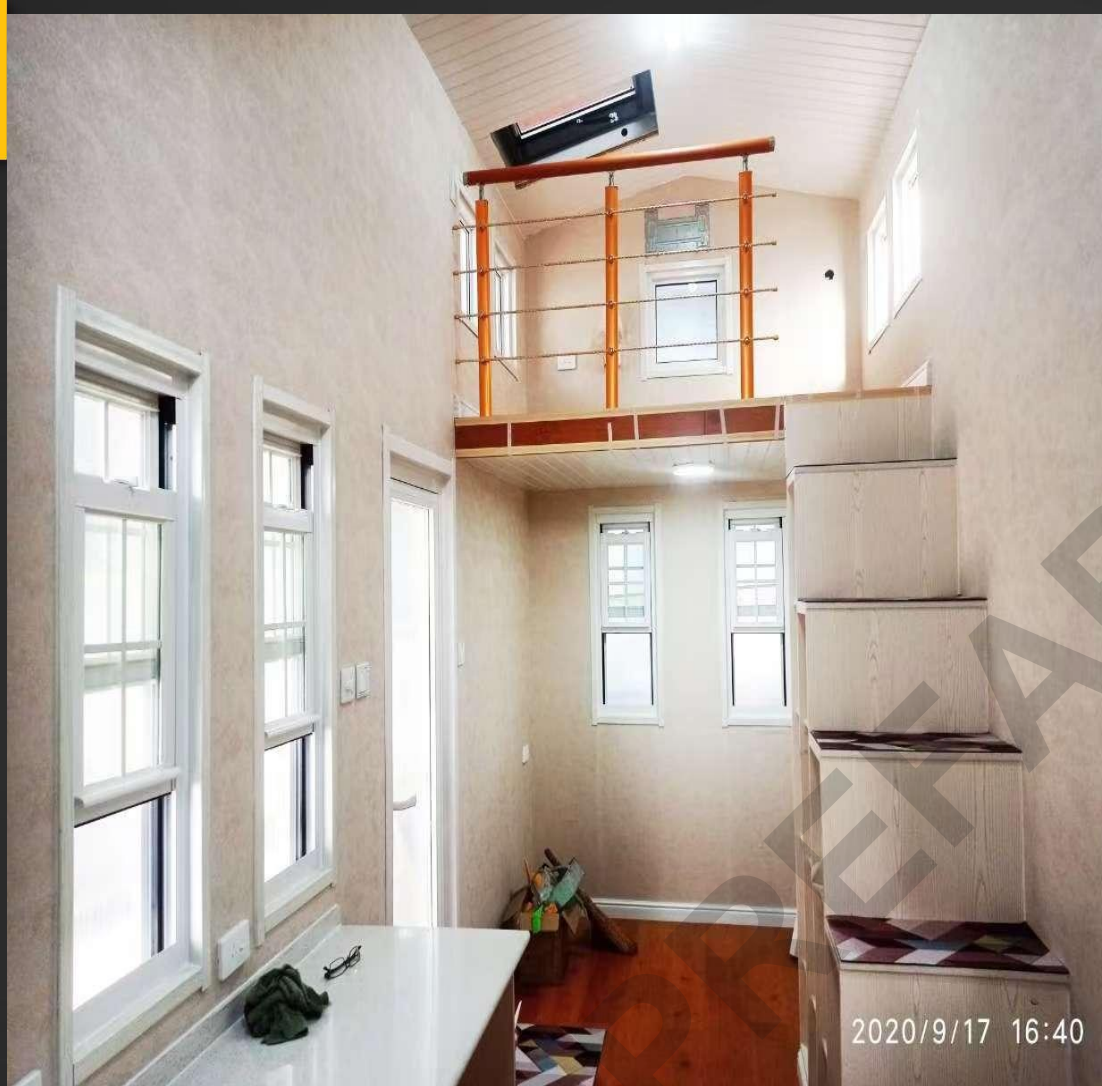


03

LIFT STYLE



- Length: 8 M
- Main Market: Australia & New Zealand
- Color: Customization



- Wooden Floor tile with thickness of 9mm
- Storage stairs
- Marble table



03

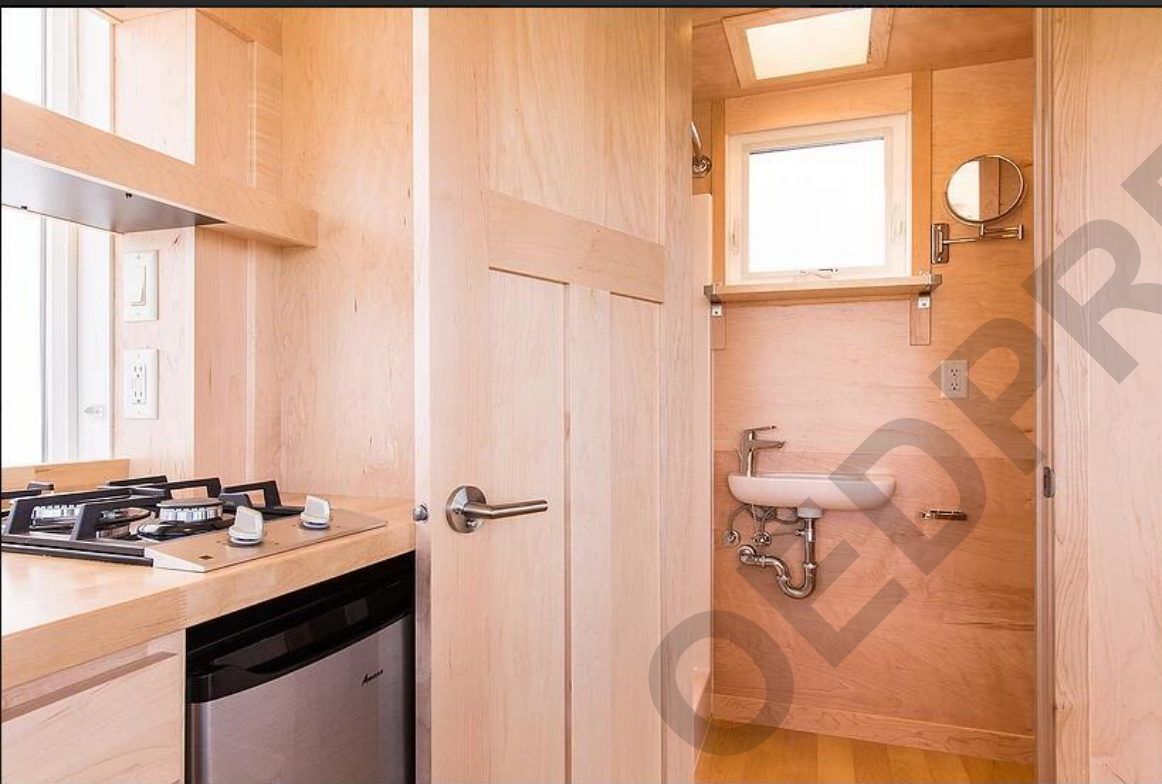




Visita style

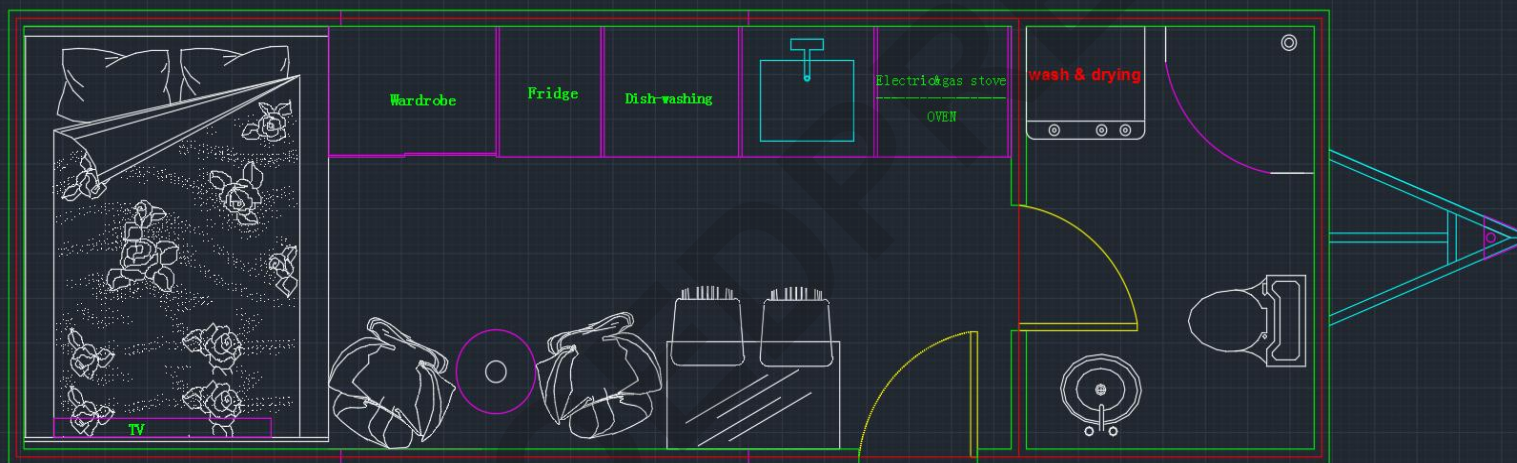
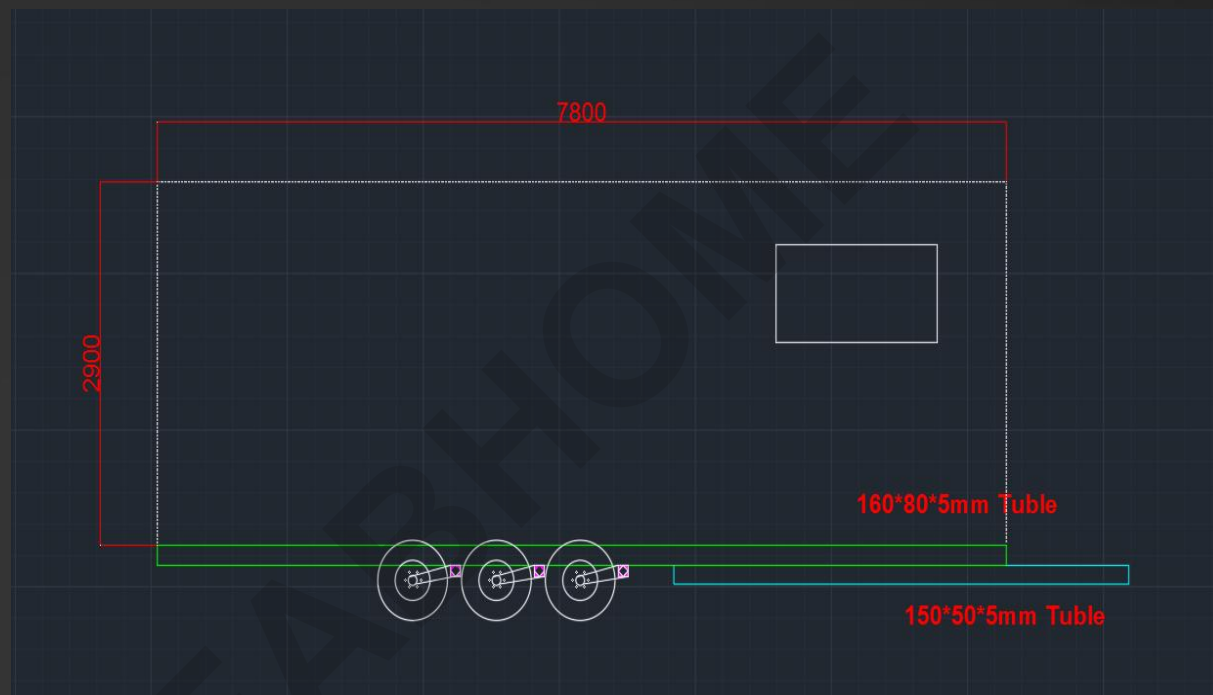


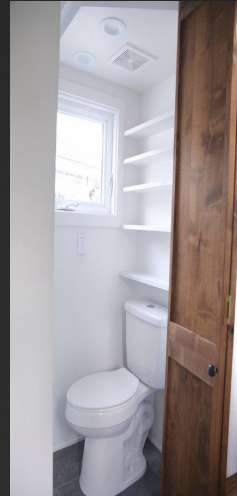
Enjoy your life



04

Layout





SEABOOK
STYLE

05

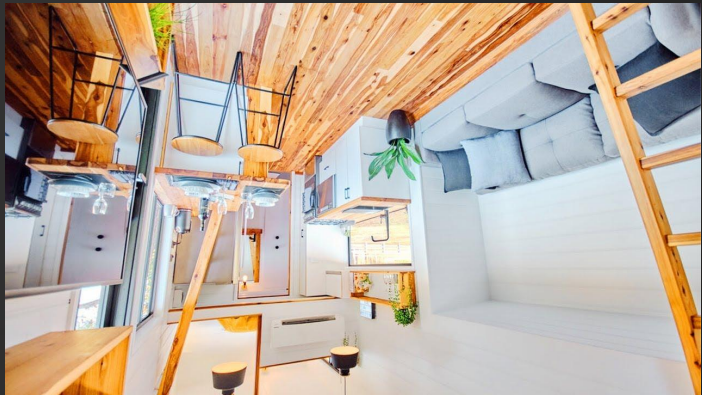


SOJOURNEY STYLE

06



06



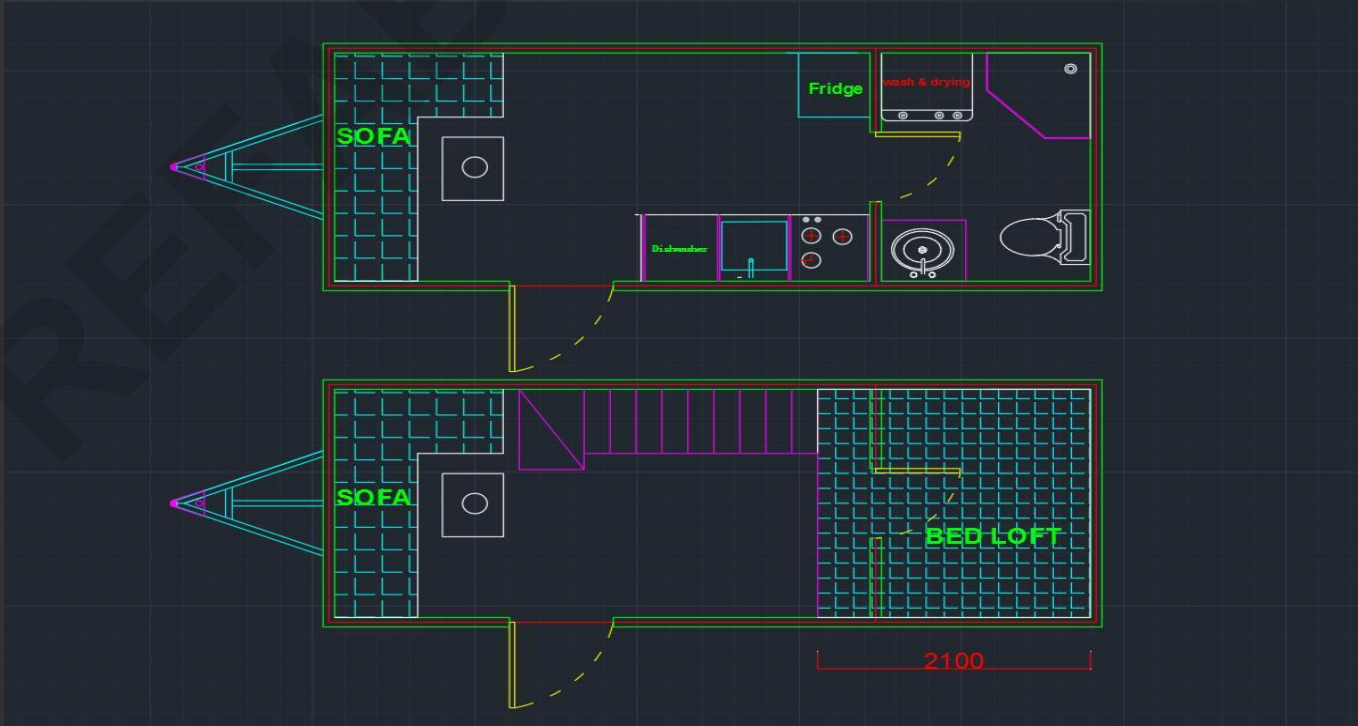
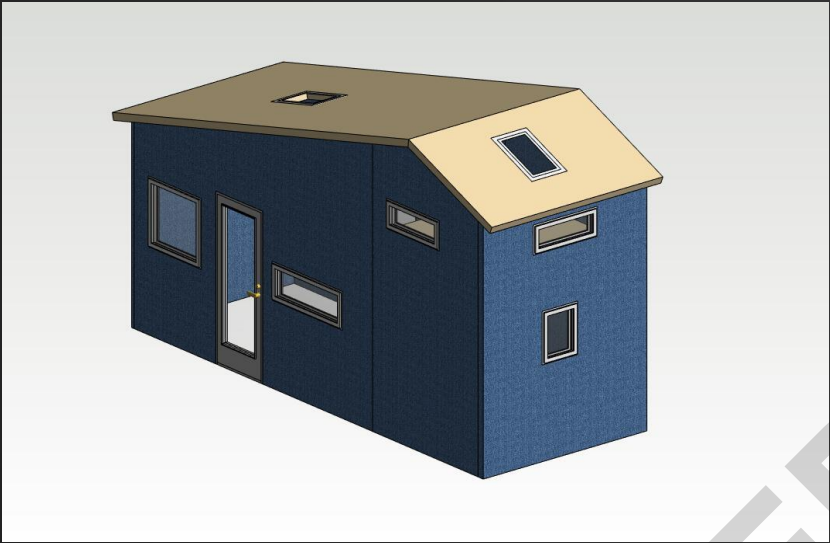


- House size:
5.8*2.3*4.2M
- One loft for bedroom

6 M
ADVENTURE
STYLE

07







6M PINK HOUSE

08

09

[View More](#)





10



STANDARD CHASSIS

- Trailer: 120*60*4.5mm square tube +60*60*2.5 square tube+60*60*1.2mm square tube
+ 30*50*1.5mm square tube
Black color paint
- Stand axle with electromagnetic brake
- Connector with handbrake and tow ball for 4.5 ton ATM
- Wheels:4Pcs(215/75R16)
- Trailer jack: 4Pcs for house
1pcs for trailer head
- OSB board for base board

House Shell

- Main structure :C89 light gauge steel structure with Joints and Screw Bolts, G350,
Z275,89mm width
- Thermal insulation system: Rock wool board for wall and roof/ XPS for floor system
- Roof: Bituminous waterproof sheet + Color asphalt shingle
- External wall :wood siding bard + dark grey aluminium-plastic panel
- Interior wall: White wood siding board
- Ceiling:Interior wall: Red Cedar ceiling board
- Flooring:Inner wood floor deck
- Trailer lamps in accordance with local regulations
- For living wall , we will used the stone board in middle, glue it on the wall .

WINDOWS & DOOR

- Windows: double glaze aluminum alloy windows and doors,Bridge-cutoff Windows (out
gray and inside white color) 3+9A+3mm double toughened glass,
- Main Door:Sliding double glaze aluminum alloy door, 5+9A+5mm double toughened glass,

Specifications



CUSTOMER VISIT OUR FACTORY



WELCOME FOR YOUR INQUIRY!!



Call For Pricing and Shipping
1-800-518-0413



Dealership Opportunity





OUR SERVICES

We offer the full spectrum of services to help organizations work better.



ROAD
CONSTRUCTION



GREAT
DESIGNER



OVERALL
IMPROVEMENT

WWW.OEDPREFABHOMES.COM

OED PREFABHOMES

www.oedprefabhomes.com

