



OED PREFAB HOMES



CATALOG

CONTAINER HOUSE DISPALY

Inner room design-living house and office



PRODUCT DISPLAY



Drainage system patented design, real rainstorm test leak-proof



Better waterproof and easier installation



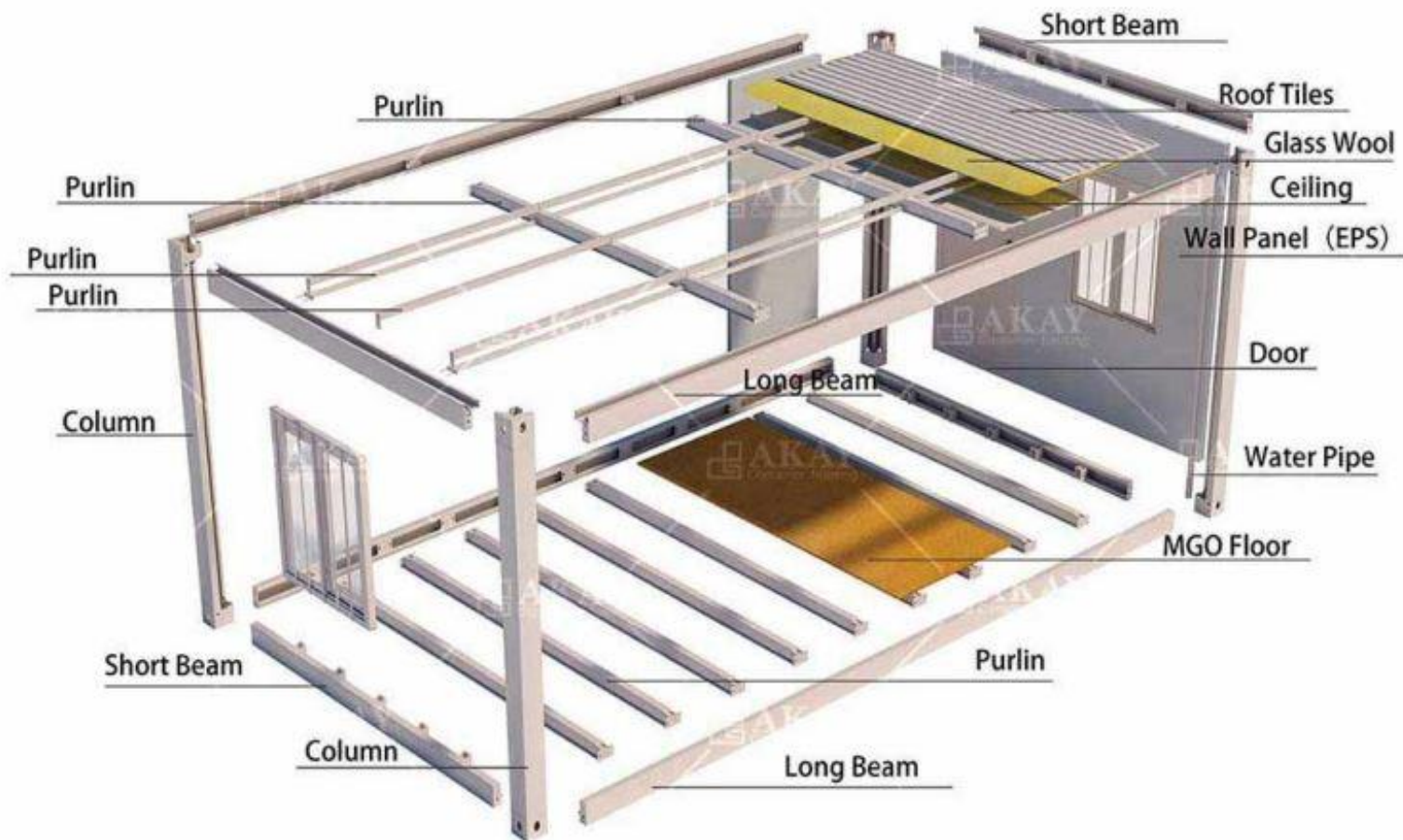
Detachable Container House 160 C





Detachable Container House 160C

Standard Container House size: 5950*3000*2850mm



OVERSTOCK

EXPRESS





Container Size



Spray color



Wall Panel



EPS



Rock wool



Glass wool



PU



Color, thickness, appearance shape and core materials Can be customized

Decorative Floor and Linoleum



MGO Floor



Fiber Cement



Anti-corrosion Floor



PVC Composite tone Plastic Floor



270-6 025-3 275-3



348-5 EC105



EC302 EC303 EC304 EC306 EC305



ED408#

More Decorative Materials



PVC Decorative Strip



Decorative Wall Panel



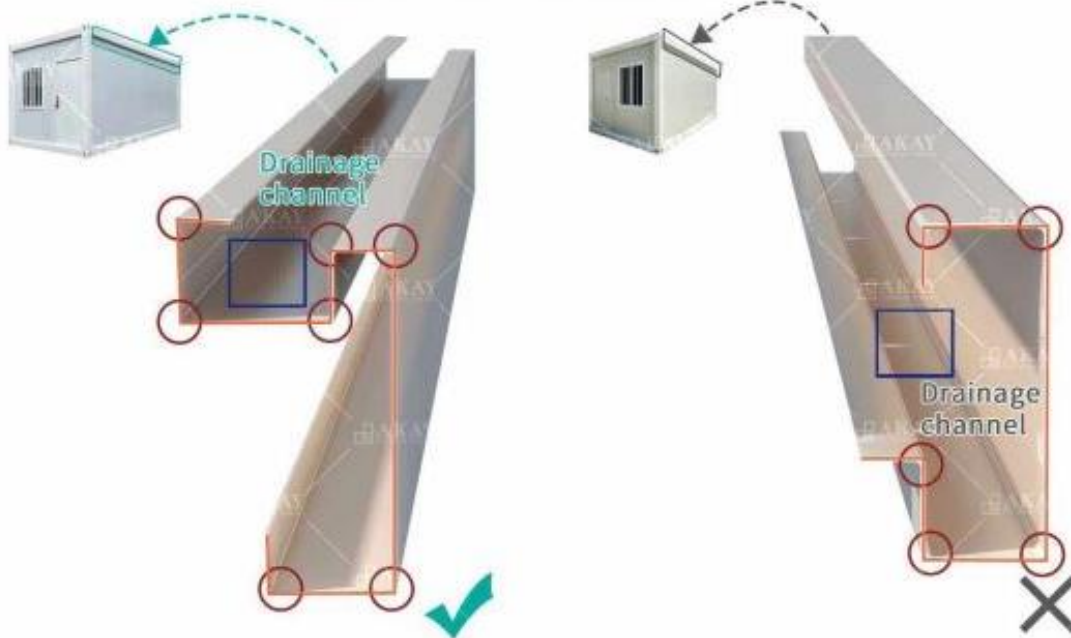
Decorative Wall Panel

AKAY 160C

VS

Other

1 Comparison of Top Beam



- ☐ The top beam has no holes and is an integral beam structure
- ☐ 7 bending angles, higher compressive strength
- ☐ The expanded width is 435mm, more materials are used, and the compression resistance is stronger

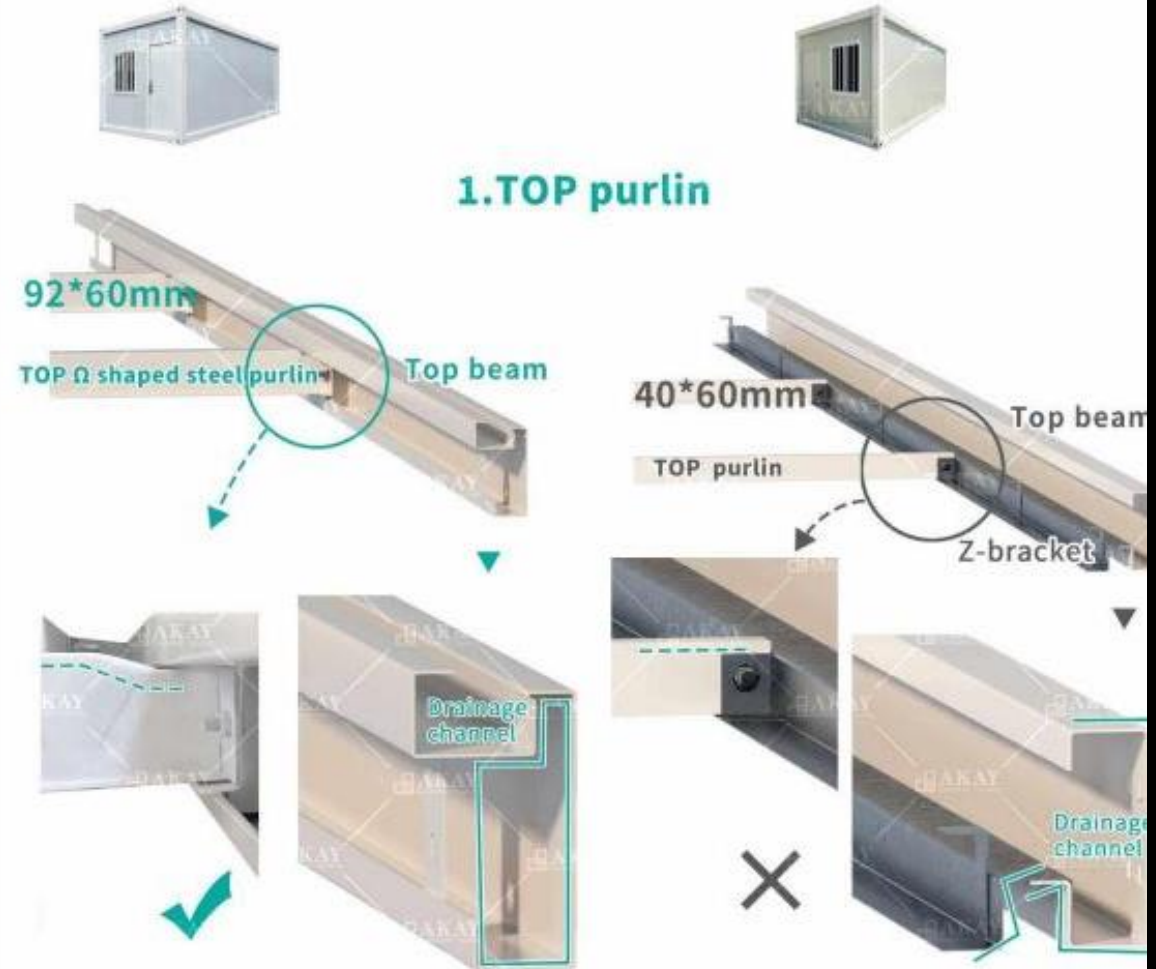
- ☐ The top beam is equipped with drainage holes, which damages the stressed structure
- ☐ 5 bending angles, low compressive strength
- ☐ Unfolded width: 365mm, less material used, poor pressure resistance

AKAY 160C

VS

Other

2 Comparison of Compressive strength



The top Ω shaped steel purlin and drainage channel are designed in an integrated way. The top Ω shaped steel purlin is firmly connected with the top beam, with uniform compressive distribution. The size of the top purlin is 92 * 60mm

The top purlin is directly connected with the Z-shaped support, which causes the top beam to be pulled and deformed after the Z-shaped support is compressed (unilateral stress). The size of the top purlin is 40 * 60mm



AKAY 160C VS

Other

2. Bottom purlin



Bottom Ω shaped steel purlin
92*60mm



Groove design, rainwater will not seep into the floor, and the bottom purlin is 92 * 60mm



Bottom purlin
40*60mm



There is no groove, rainwater can easily seep into the floor, and the bottom purlin is 40 * 60mm

AKAY 160C

VS

Other

3 Comparison of Drainage



Patented drainage design, combined with downpipe drainage to the sewage pipe, the connecting unit also has independent drainage capacity



The drainage of the bottom hole of the beam leads to the rusting of the wallboard. The connecting box uses the groove to accept the drainage of the two beams. The water seeps from the column, resulting in the water seepage between the beam column and the ground in the room



AKAY 160C

VS

Other

4 Rock wool wall comparison



Thick steel with high density of rock wool
causes smooth incision



Thin steel with slag rock wool leads to
uneven incision

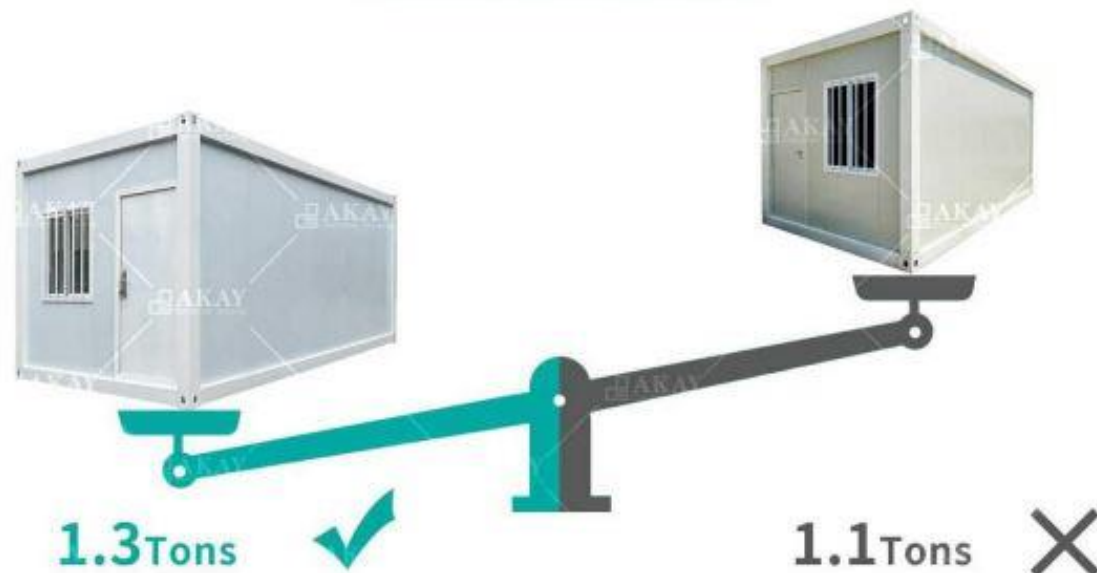


AKAY 160C

VS

Other

5 Whole weight



AKAY 160C

VS

Other

6

Comparison of Bearing Capacity



Bearing capacity: 6 tons



Bearing capacity: 2 tons



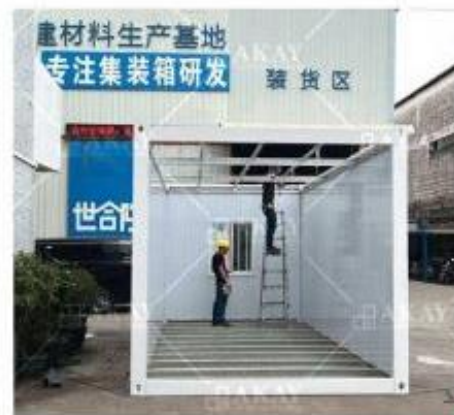
AKAY 160C

VS

Other

7

Comparison of Installation



Easier installation



Complex and not easy to install



DETAILED PREFILLING



PRODUCT DESCRIPTION

One-stop solution for your building project Save your time,save your cost

Product name	2021 Australian Standard Bangladesh Prefab House 20Ft Flat Pack Building Container
Customized	100% customized
Desgin	CAD/3D design
Min.order	1pcs is acceptable
Service	One-stop shopping
Certification	CE,BV,SGS
History	10years factory experiences
Quality	Quality control system
Shipping	Container loading inspection
Insurance	Shipping insurance



PRODUCT SHOW

One-stop solution for your building project Save your time,save your cost



Item	EPS	PU	Rock wool	Glass wool	EPS Cement sandwich board
Water proof	★★★★★	★★★★★	★★★★	★★★★	★★★★★
Fire proof	★★	★★★★★	★★★★★	★★★★★	★★★★★
Heat Insulation	★★★	★★★★★	★★★★★	★★★★★	★★★★★
Sound Insulation	★★★★★	★★★★★	★★★★★	★★★★★	★★★★★
Price comparison	★★	★★★★★	★★★★★	★★★★	★★★★
Density range	6-20kg/m ³	35-45kg/m ³	80-120kg/m ³	40-80kg/m ³	650-780kg/m ³

MATERIALS and LAYOUTS

Material



1. PVC Exterior Wall Panel
Antioxidant, Anticorrosion, Low Cost, Energy Saving, Easy to Install.

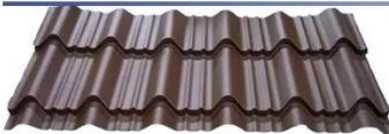
2. Wood Grain Fiber Cement Siding Board
More Beautiful in Appearance, Durable, Lightweight, Heat Insulation, Soundproof, Fireproof, Mouldproof, Termiteproof.



3. Artificial Culture Stone
Eco-friendly, Energy Saving, Colorful, Easy to Install, Low Temperature Resistance, Fireproof, Mouldproof.

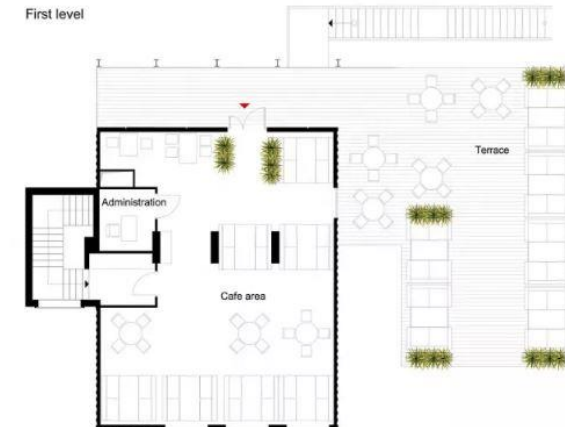
Roof

1. Metal Stone Tile
Lightweight, Strong, Durable, Stable, Easy to Install.



2. Metal Tile
Lightweight, Strong, Rainproof, Long Life Span, Colorful, Easy to Install, Free from Maintaining.

3. Asphalt Tile
Waterproof, Various, Colorful, Lightweight, Easy to Install.





INSIDE MOCK UP











INSIDE CONTAINER HOME



Expandable House

Expandable container house is convenient to assemble and can be moved frequently. >



1, 2 and 3 bedroom Foldable Homes

Classic room layout



30ft layout 1	open size	9000*6300*2500mm (54m³)
	closed size	9000*2250*2500mm (one in 40HC)
	layout	2 bedrooms, 1 living room, 1 kitchen, 1 bathroom
	facility	toilet, vanity, shower room, towel rack, mirror, kitchen cabinet




Classic room layout



20ft Layout 1	open size	5850*6300*2500mm (35m³)
	closed size	5850*2250*2500mm
	layout	1 bedroom, 1 living room, 1 kitchen, 1 bathroom
	facility	toilet, vanity, shower room, towel rack, mirror, kitchen cabinet




Classic room layout



30ft layout 2	open size	9000*6300*2500mm (54m³)
	closed size	9000*2250*2500mm (one in 40HC)
	layout	3 bedrooms, 1 living room, 1 kitchen, 1 bathroom
	facility	toilet, vanity, shower room, towel rack, mirror, kitchen cabinet




CAFÉ MOCK UP



WINE TASTING BAR MOCK-UP



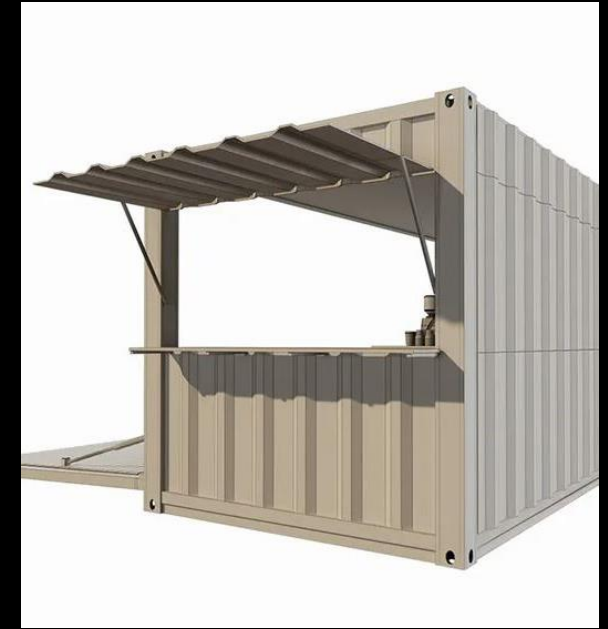
WINE TASTING BAR



PRODUCT DESCRIPTION:

Name	Wholesale Prefabricated Outdoor Container Restaurant with kitchen
Main Frame	2.4mm Steel Bending with Powder Painting
Wall	50/75/100mm Sandwich Panels
Roof Sheet	0.5mm Color Steel Sheet
Roof Insulation	50mm Glass Wool with aluminum Foil
Ceiling	0.4mm Color Steel Sheet
Flooring	Galvanized Steel Square Tube+18mm MgO Panel
Window	Aluminum Window with Security Grille
Door	0.85*2.05m Steel Security Door

Wind-resistance	Grade 11
Earthquake-resistance	Grade 7
Live load capacity of roofing	0.6kn/m2
Wall permitted loading	0.6kn/m2
External and internal wall heat transmission coefficient	0.35kcal/m2hc
Density of EPS	8~12 kg/m2
Delivery time	Normally 10-15 days
Container loading	10 sets/40HQ



CONTAINER HOUSE DISPALY

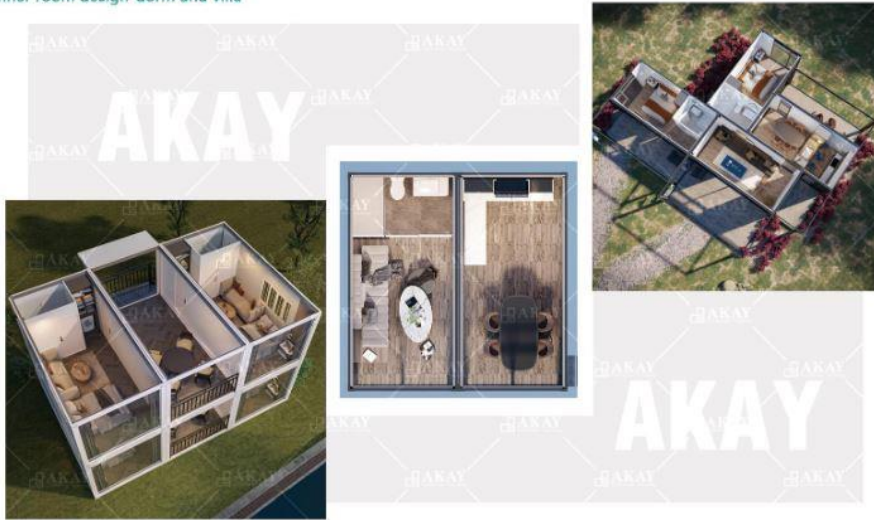
Inner room design-living house and office



CONTAINER DISPLAY

CONTAINER HOUSE DISPLAY

Inner room design-dorm and villa



CONTAINER HOUSE DISPLAY

Inner room design-house and functional room



CONTAINER HOUSE DISPALY

Feature Details



AKAY



CONTAINER HOUSE DISPLAY

Feature Details

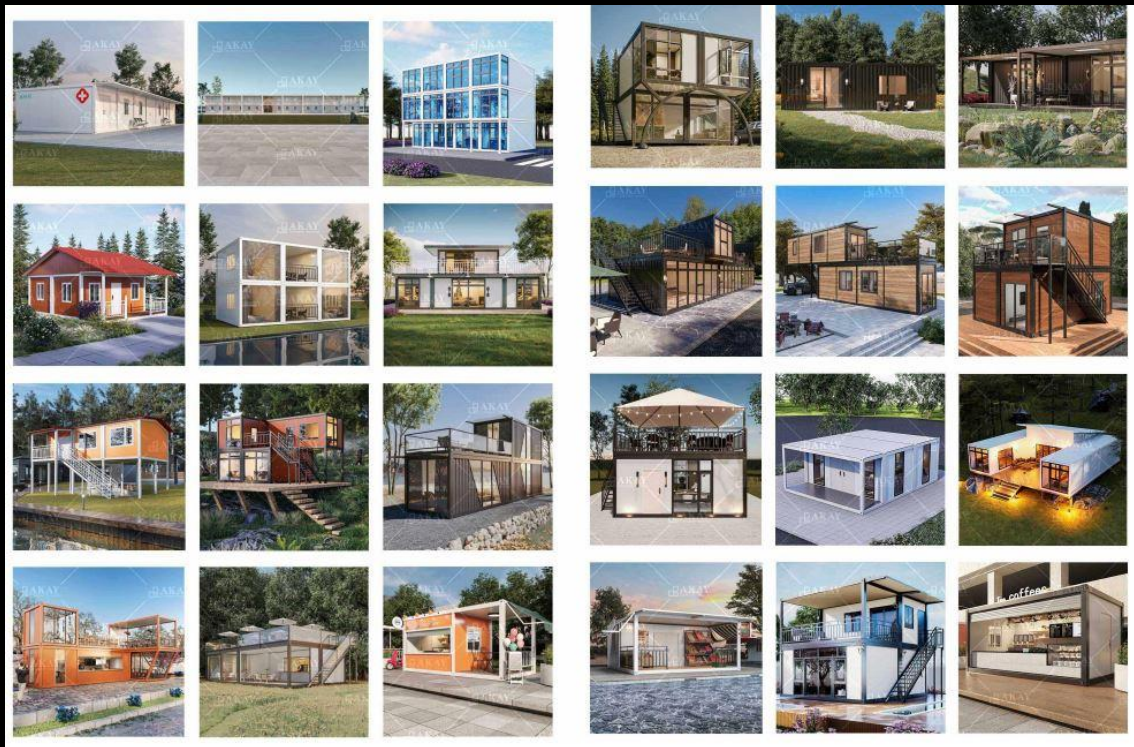


CONTAINER HOUSE DISPLAY

Feature Details



CONTAINER MATERIALS



CONTAINER HOUSE

Layout Reference



- Single layer + Rainshed ▼



- Two layers+External stair
Balcony+Rainshed ▼



- Three layers+built-in stair
Balcony+Rainshed ▼



AKAY

Container Size



Spray color



Wall Panel



EPS

Rock wool

Glass wool

PU



Color, thickness, appearance shape and core materials Can be customized

Decorative Floor and Linoleum



MGO Floor

Fiber Cement

Anti-corrosion Floor

PVC Composite tone Plastic Floor

270-6

025-3

275-3

348-5

EC105

EC302

EC303

EC304

EC306

EC305

ED406#

More Decorative Materials



PVC Decorative Strip

Decorative Wall Panel

Decorative Wall Panel

CONTAINER HOUSE OPTIONS

Bathroom Option ■ ■ ■ ■ ■



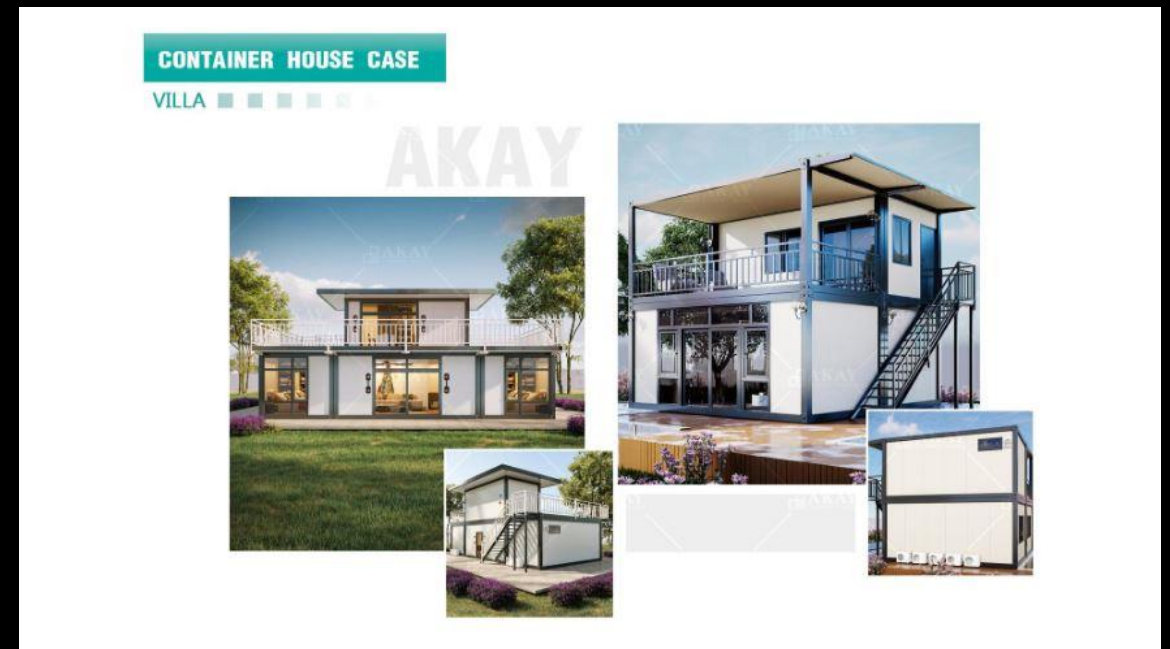
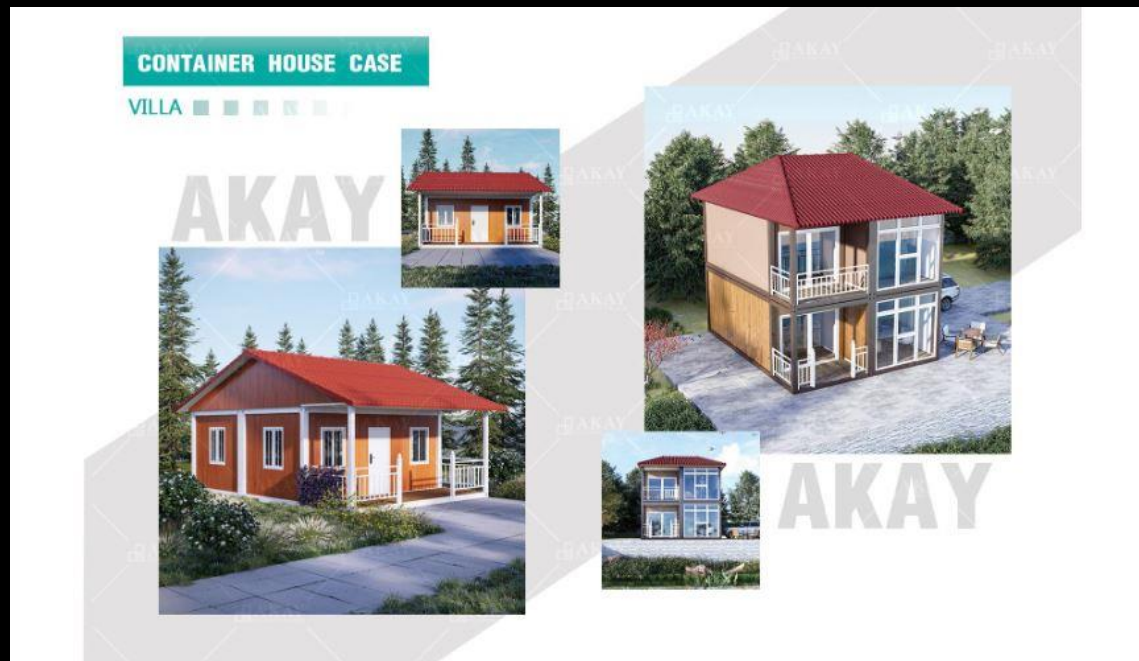
AKAY

CONTAINER HOUSE PACKAGING SOLUTION

LOGISTICS TRANSPORTATION



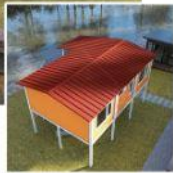
CONTAINER HOUSE VILLA



SHIP READY CONTAINER HOMES

CONTAINER HOUSE CASE

VILLA ■ ■ ■ ■ ■ ■ ■ ■ ■ ■



CONTAINER HOUSE CASE

Homestay Facility



CONTAINER DESIGN

CONTAINER HOUSE CASE

Entry Box & Public Toilet



CONTAINER HOUSE CASE

House & Beverage shop



CONTAINER HOUSE CASE

Stay facility



ONE-STOP SOLUTION

Customization Process

OUR LOGISTICS

According to the different needs of customers, customized comfortable design scheme, from all over the world customers praise, set business, office, life in one of the creative application of comprehensive service providers.



1 Project consulting

Understand customer needs and provide design solutions and product suggestions to customers.



2 Graphic design

AKAY according to customer needs to customize the design scheme for customers, free CAD drawing.



3 Efficient design team

Confirm the final plan with the customer and draw the product renderings.



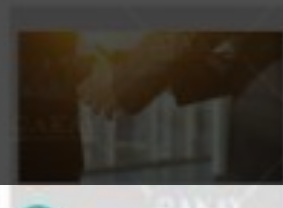
4 Logistics delivery

After placing an order, AKAY will provide full service for customers to ensure that the products can be delivered to customers as scheduled.



5 Installation Guide

AKAY provides written installation and video installation instructions to customers for free whether or not they are able to assemble our products.



6 No worries after sale

Guide maintenance and maintenance to extend the service life of products, AKAY 10 years of business philosophy has accumulated countless praise and reputation.

CRAFT and WINE BAR



INSIDE DESIGN



Professionally Built or DIY

Professional Team

Integrating design, production, after-sales and one-stop service.

Experience

Ten years of professional focus, committed to creating a safe, comfortable, beautiful, stylish and environmentally friendly activity box room.

Company Strength

Excellent equipment, batch production and supply of several production lines, obtained ISO certification, orders all over the world.

Win-Win

Provides one-stop service of design, manufacture, transportation and sales, with partners all over the world.



OVERSTOCK EXPRESS

FACTORY OVERVIEW



APPLICATION

Construction site
Field work room
emergency housing
small house
small villa
garage



WE ARE
PROFESSIONAL

